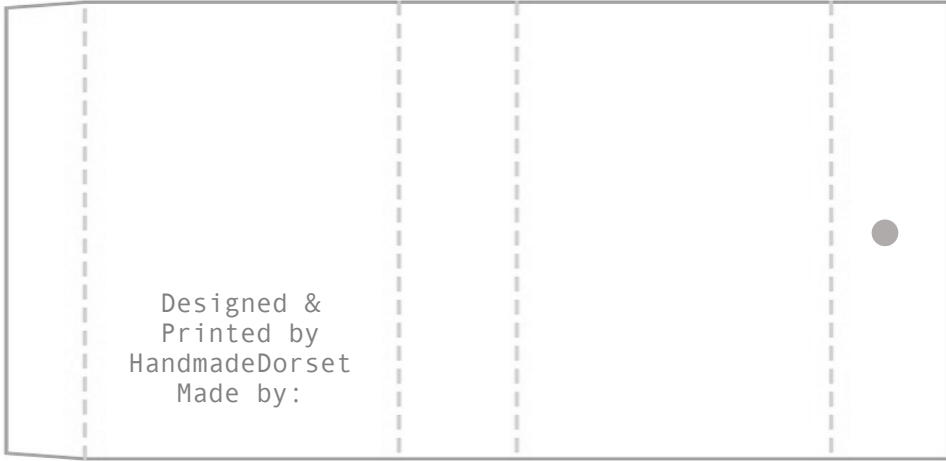
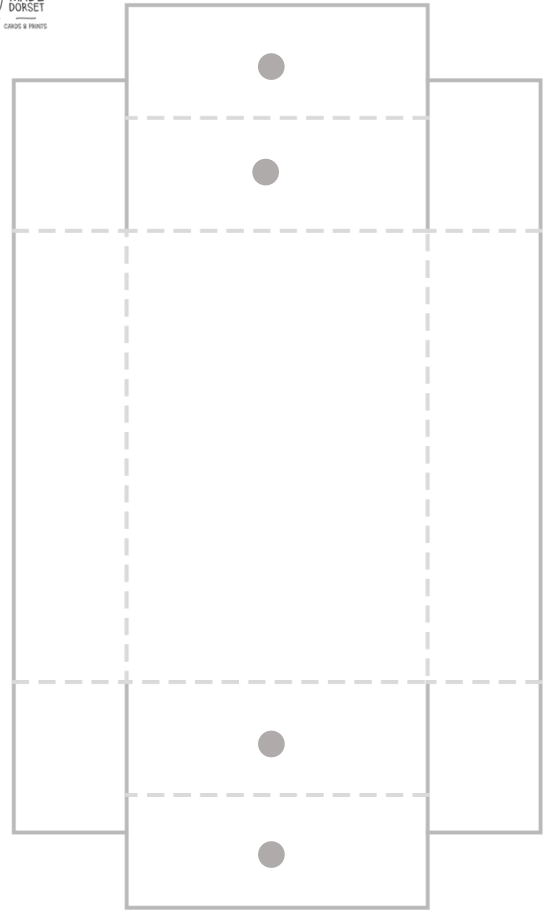
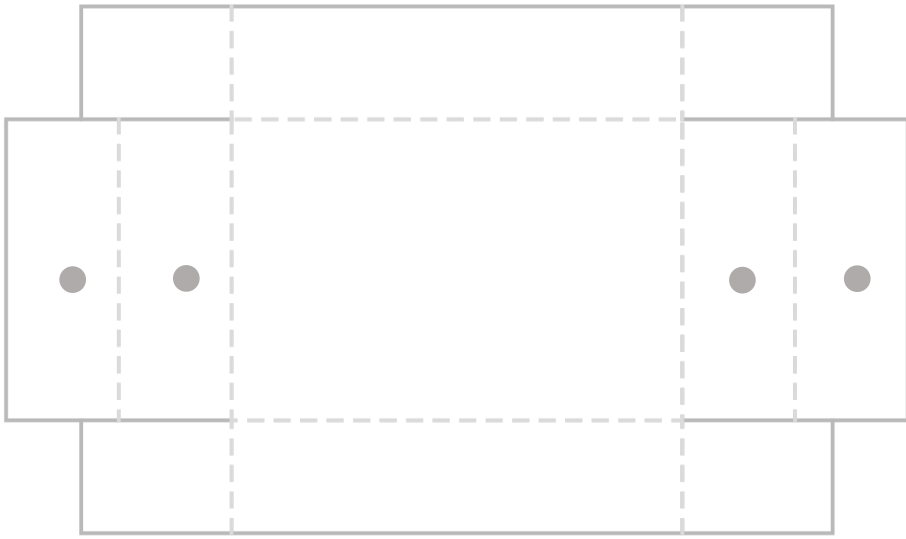
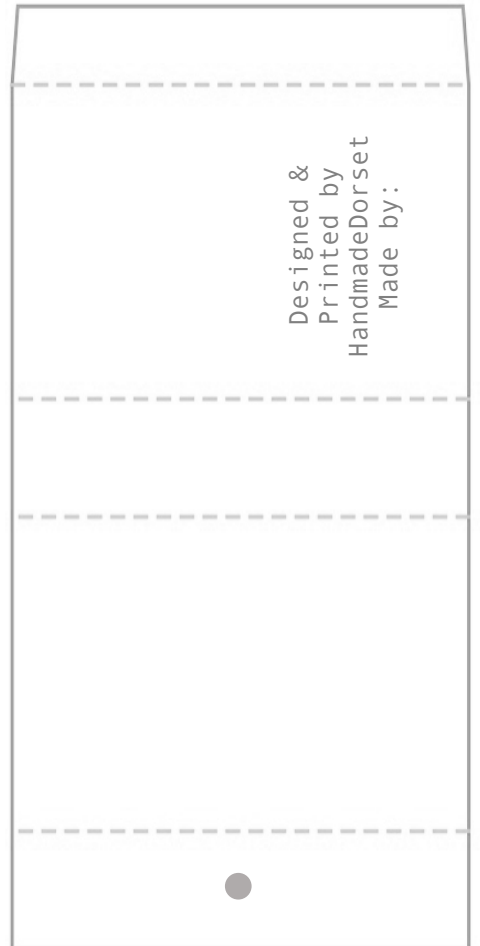
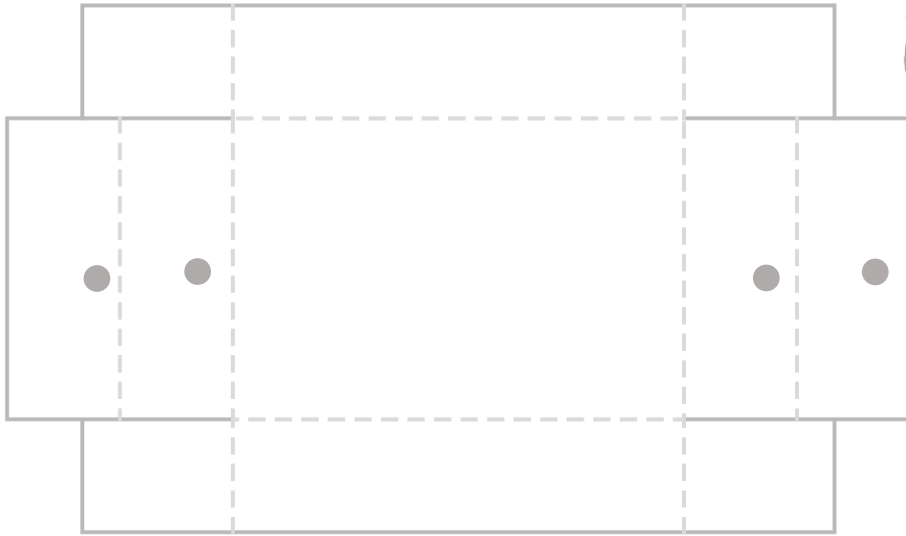




Matchbox Templates



Matchbox Templates



Matchbox

* ___ Cut the solid lines

* --- Score the dashed lines and give them a good crease

* Apply glue or double-sided tape to the dotted panels

* Fold the sides of the inside drawer in on themselves while tucking the tabs into the folds on the shorter sides of the drawer. (It sounds tricky, but you'll get it once you start!

Also, look out for little how-to videos on my social media.)

* Fold the outside sleeve to make a tube.